



MASTER ADMIN

Yeni Marine Group
841 SW Pine Tree LN
Palm City, FL, US
Office: 772-872-2232
Mobile: 866-771-6898
info@yenimarine.com

2011 Sea Ray 450 Sundancer

Boat Type: Motor Yacht

Address: Palm City, FL, US

Price: [\\$345,000](#)



OVERVIEW

Here's your opportunity to own a lightly used fully equipped 45 Sundancer with **UPGRADED QSB 480 HP HO MOTORS** that allow her to cruise at 26 Knots with ease. If you are looking for a turn key boat this is it! She was commissioned in Michigan spending the majority of her life in fresh water and it shows. Her motors have been fully serviced including the heat exchangers, pods and after coolers as recommended by Cummins Marine. Her Onan Generator has been serviced and a fresh bottom has been applied. Her interior and exterior have been detailed and show incredibly well. If you are in search of a clean well cared for 45 Sundancer with the right motors this is it. Call us directly today for your private inspection.

WE ACCEPT TRADES AND OFFER GREAT RATES

SPECIFICATIONS

Basic Information

Manufacturer:	Sea Ray	Vessel Name:	#BeBa
Model:	450 Sundancer	Boat Type:	Motor Yacht
Year:	2011	Hull Material:	Fiberglass
Category:	Power	Hull Type:	
Condition:	Used	Hull Color:	
Location:	Palm City, FL, US	Designer:	
Available for sale in U.S. waters:	Yes	Flag of Registry:	

Dimensions & Weight

Length:	45 ft - 13.72 meter	Draft - max:	3 ft 2 in - 0.97 meter
LOA:	-	Bridge Clearance:	-
Beam:	13 ft 2 in - 4.01 meter	Dry Weight:	21750 ft - 6629.4 meter

Engine

Make:	Cummins	Engine Type:	Inboard
Model:	480 HO	Drive Type:	
Engine(s):	2	Fuel Type:	Diesel
Hours:	565	Horsepower:	480 (Individual), 960 (combined)
Cruise Speed:	30 MPH	Max Speed:	-
Range:	299 MI	Joystick Control:	No

Tank Capacities

Fuel Tank:	285 gallons - 1 tank(s)	Holding Tank:	42 gallons - 1 tank(s)
Fresh Water Tank:	70 gallons - 1 tank(s)		

Accommodations

Total Cabins:	-	Crew Cabins:	1
Total Berths:	2	Crew Berths:	1
Total Sleeps:	1	Crew Sleeps:	1
Total Heads:	1	Crew Heads:	1
Captains Cabin:	-		

DESCRIPTIONS

Steering System

Joystick Control **Manufacturer Provided Description**

The 450 Sundancer advances Sea Ray's tradition of forward thinking with innovative and trend-setting features like its standard Axis propulsion system with joystick control, a fiberglass hardtop with retractable sunroof, a cockpit entertainment center with optional grill and TV, and a designated "media room" in the cabin. Add all these things together, and you could have the most adaptable, user-friendly express cruiser on the water. Starting topside, the 450 builds upon the versatility of its Sundancer siblings with a seamless hardtop and bonded-in windshield that provide unsurpassed climate control thanks to a forward vent, sunroof, and optional cockpit air conditioning/heating. The benefit is comfortable boating in all kinds of weather. Two, doublewide benches with flip-up bolsters and armrests serve the helm and port console. The helm itself comes with a full complement of driving and navigation aids to make operation easier than ever, from the SmartCraft VesselView display, to the Axis or Zeus joystick control, to the amazing Skyhook station-keeping feature. Twin diesel Zeus pod drives are also available either with the QSB 380's or the **QSB 480's**, allowing customers to personalize their power depending on how and where they boat. Leisure possibilities abound at the large, U-shaped cockpit lounge with removable table. The aft-most backrest of this seat is split, and the two sections pivot open to create an extension of the sun pad, which has abundant storage below for lines, fenders, and other necessary items. On the starboard side of the cockpit, a big, L-shaped wet bar with icemaker will keep everyone hydrated, and owners can choose to add an optional grill, refrigerator, and removable 19" flatscreen TV to create an "outdoor galley" atmosphere. Under the sleek exterior of the 450 lies a classic-contemporary interior, with top-of-the-line cabinetry from Sea Ray's Cape Canaveral Woodworking and Finishing Facility, Ultraleather seating, brushed chrome accents, and optional wood floors. Ambient light from the oversized hull windows and skylight gives a natural glow to the earthy materials used in the cabin. The forward stateroom features a full-size island V-berth with memory foam mattress and electric extension and Posturepedic backrest, plus a Shoji-style sliding door and separate head and shower compartments with tile floors. The main cabin houses a spacious galley with stainless-steel appliances and loads of storage along the port side; to starboard, a dining area with folding table easily converts to a sleeper. The Sony stereo located here comes fully outfitted with an iPod docking station, CD player, Sirius satellite receiver, amplifier, subwoofer, and more. At the heart of its entertainment-ready interior, the 450 features a unique media room abaft the salon that comes complete with theater seats, accent lights, and an entertainment system boasting a gaming system port, MP3 port, DVD player, and a 32-inch TV. If it's true surround-sound feel you're looking for and a large-screen experience, select the optional entertainment package that offers the Bose 3-2-1 System and 37-inch flatscreen. Those two options will surely keep any child or adult happy. A pair of ottomans serve double duty. These ottomans not only have storage inside, but the tops are reversible - one side has a wooden tabletop; the other is cushioned. You can either place your drinks and snacks on the table side, or flip it over and throw up your feet and relax! (There are also hanging lockers to port and starboard, as well as a storage cabinet). The theater seats convert to a double berth by way of their slide-out base, and a curtain provides nighttime privacy. A long list of options allows the owner to rig the new 450 Sundancer with advanced electronics, generators, teak exterior decking, a foredeck sun pad, hydraulic-lift swim platform, rod holders, and several choices of upgraded stereos and TVs throughout.

Key Features

- Doublewide helm and companion seats with flip-up thigh-rise bolsters
- Cockpit wet bar with sink and faucet, solid-surface countertop, stainless-steel handrail, trash receptacle, and storage cabinet
- U-Shaped aft seating with storage.
- Electrically actuated engine compartment hatch.
- Standard SmartCraft® Instrumentation and VesselView.
- 12V Sony® AM/FM stereo with single CD player, eight speakers, and digital cockpit remote control
- Sirius® satellite receiver with antenna (N/A outside N. America)
- Standard VHF radio.
- Media room with theater seating, accent lights and 40" flatscreen TV with remote DVD player and Bose Sound System
- Separate shower and head for master stateroom
- Ultraleather™ standard on all interior seating
- Large integral/extended swim platform with heavy-duty stainless steel swim ladder.
- Standard generator with sound shield
- Fiberglass hardtop with full enclosure
- Water manifold system with shutoff valves
- Underwater exhaust.
- Sea Ray Owners Club™ membership (available in USA & Canada)

AIR CONDITIONING/HEATING

- Cabin, Zone-Controlled Reverse-Cycle System (22,000 BTU)
- Custom Integral Vent System

CABIN FEATURES

- Blinds, Wood
- Carbon Monoxide Monitors
- Carpet Runners, Interior (Sunbrella®)
- Carpet, Masland 55-Ounce, 100% Stainmaster BCF Nylon w/Dupont Advanced Teflon Repel System
- Curtains & Drape Trim
- Flooring, Carpet
- Flooring, Wood - V-Berth
- Handrails, Stainless Steel
- Lighting, Multi-Color LED
- Outlet & Switch Plates - Polished Chrome Finish
- Outlet, Phone
- Outlets, 120V GFI Protected
- Outlets, 12V Accessory
- Pillows, Accent
- Steps, Entryway - Wood w/Stainless-Steel Handrail

CANVAS (SUNBRELLA)

- Aft Curtain w/Bungee Cords
- Canvas Storage Bag

CERTIFICATIONS

- Meets Applicable USCG & ABYC Standards
- NMMA Certification

COCKPIT FEATURES

- Beverage Holders (6)
- Carpet Liner, Snap-In
- Cooler, Carry-On w/Designated Storage
- Door, Cabin Entry (Sliding & Lockable) w/Skylight
- Door, Transom w/Stainless-Steel Frame & Arctic Insert
- Floor Liner, Fiberglass - Self-Bailing
- Handrails, 316 Stainless Steel
- Hardtop, Fiberglass w/Retractable Sunroof, Overhead Lighting & Electronic Dimmer
- Hatch, Engine Room - Electrically Actuated
- Ice Bucket, Insulated - Built-In
- Icemaker, 120V
- Lighting, Indirect
- Outlet, 120V GFI Protected
- Outlet, 12V Accessory
- Seating, Aft - U-Shaped w/Storage Below
- Seating, Double-Wide Helm w/Flip-Up Thigh-Rise Bolster, Armrests, Heavy-Duty Pedestal w/Slide & Pneumatic Vertical Adjustment
- Seating, Port Double-Wide w/Flip-Up Thigh-Rise Bolster, Armrest & Fiberglass Storage Base
- Ship's Bell
- Steps, Molded - Deck Access
- Stereo - Amplifier, 10" Subwoofer, Digital Cockpit Remote Control & Speakers (4)
- Storage, Side Panel - Port & Starboard
- Sun Pad, Cockpit w/Storage Below
- Table, Cockpit - Fiberglass w/Dedicated Storage
- Wet Bar w/Sink, Faucet, Solid-Surface Countertop, Stainless-Steel Handrail, Trash Receptacle & Storage Cabinet - Starboard

CONTROL STATION

- Alarms, High-Water - Bilge & Cabin
- Battery Parallel Switch - Engines
- Compass
- Dash, Gel Coated - Agate
- Horns, Air (Concealed) - Dual Trumpet
- Instrument Panel, High-Gloss
- Power Steering, Hydraulic w/Wood Accent Isotta Tilt Wheel
- Shift & Throttle Controls - Electronic (MerCruiser DTS)
- SmartCraft Diagnostics:
 - Instrumentation, Custom Sea Ray SmartCraft w/Low-Glare Blue Night Lighting & Chrome Bezels
 - 4-in-1 Multigauges (2) (Includes: Fuel Level, Oil Pressure, Voltmeter & Water Temperature) - Tachometers (2)
- SmartCraft VesselView Display:
 - Propulsion: Engine Hour Meters, Engine Status, Performance & Fuel, Peak Performance, Boost Pressure (Optional), Troll Control & Cruise Control
 - Vessel: Vessel Status, Tank Status, Steering Position & Generator Data

ELECTRICAL SYSTEMS

- Batteries w/Trays (4)
- Battery Charger/Converter, 120V/40 Amp/12V
- Battery Switches, 2-Way Solenoid Activated (MDP & Bilge)
- Cable TV System w/Inlet (Includes Phone Inlet), TV & Phone Shore Cords, Coax Outlets, Gain Control & Omni Directional Antenna
- Galvanic Isolators (2)
- Panel, DC Circuit Breaker - Remote
- Panel, DC Main Breaker
- Panel, Main Distribution - AC
- Panel, Main Distribution - DC
- Shore Power Transformer, 240V/50 amp / 60 Cycle / 12 Kva
- Shore Power, Dual 120V/30 Amp w/50' Cords
- Wiring, Color-Coded w/Chafe Protection

ELECTRONICS

- Autopilot, Integrated w/Axius or Optional Zeus System (Waypoint Control Requires Chartplotter)
- Electronics Circuit, 12V/50 Amp
- VHF Radio w/Remote Speaker & Fiberglass Antenna

ENGINE ROOM

- Bilge Pumps, 12V Automatic (2)
- Bilge Pumps, 12V Automatic High-Water (1 Bilge, 1 Cabin)
- Blowers, 12V Bilge (2)
- Fire Suppression System - Automatic w/Manual Pull
- Gel-Coated Engine Room
- Ladder, Stainless Steel - Removable
- Lighting, 12V - Engine Room

FORWARD HEAD - STARBOARD

- Bathroom Tissue Holder
- Door, Privacy - Access from Forward Stateroom & Salon
- Floors, Tile
- Handrails, Stainless-Steel
- Head, VacuFlush®
- Mirror
- Power Vent, 12V w/Stainless-Steel Grill
- Robe Hook
- Speakers (2)

- Storage Drawers - Underbed (2)
- Storage, Gunwale Cabinet - Mirrored
- Towel Bar
- Vanity w/Solid-Surface Countertop, Sink, Faucet & Storage Below

FORWARD SHOWER - PORT

- Curtain, Shower
- Door, Privacy - Access from Forward Stateroom
- Floors, Tile
- Handrails, Stainless Steel
- Robe Hook
- Shower w/Seat, Adjustable Shower Wand & Dedicated Shampoo Bottle Storage
- Storage, Gunwale Cabinet

FORWARD STATEROOM

- Bed, Full-Size Island-Style w/Mattress, Electrically Actuated Extension & Posturepedic Backrest w/Visco Elastic Foam Mattress & Drawer Storage Below
- Decorative Rope Locker Bulkhead w/Accent Lighting
- Door, Privacy - Handcrafted Solid Wood w/Translucent Screens
- Lighting, Task - 12V, Port & Starboard (at Head of Bed)
- Linens - Pillows, Sheets & Coordinated Spread
- Storage, Gunwale Cabinets - Port & Starboard
- Storage, Hanging Lockers (2) - Port & Starboard
- TV, 22" Flatscreen w/DVD Player

FUEL SYSTEM

- Fuel Filters, Remote (Racor Filters for Diesel Engines)
- Fuel Lines, USCG - Type A-1
- Fuel Tanks, Aluminum w/Electric Shutoff Valves (Manual Valves for Diesel) & Ultrasonic Sending Units
- Fuel Transfer Pump, Electric (Available Only w/Diesel Engines)

GALLEY

- Coffeemaker, 120V
- Countertop, Solid Surface w/Sink, Single-Lever Faucet & Sink Cover
- Handrail, Stainless Steel
- Microwave w/Stainless-Steel Front - 120V
- Power Vent, 12V w/Stainless-Steel Grill
- Refrigerator/Freezer w/Stainless-Steel Front - Dual Voltage
- Storage, Drawers w/Cutlery Insert
- Storage, Upper & Lower w/Designated Plate & Glass Storage
- Stove, Two-Burner (Recessed) w/Solid-Surface Cover - 120V
- Trash Receptacle

HULL & DECK FEATURES

- Bottom Paint
- Bow Rail, 316 Stainless Steel w/Welded Stanchions, Intermediate Rails & Life Lines
- Canvas Color (Black, Blue or Pewter)
- Cleats, Custom Sea Ray Thru-Bolted - Stainless Steel (8)
- Deck Fill Plates, Stainless Steel
- Deck Rails, 316 Stainless Steel
- Drain Plugs, Brass-Threaded - Garboard
- Gel Coat - Arctic White
- Gel Coat Deck Accent - Agate
- Graphics, Striping
- Graphics, Transom Numerator
- Handrails, 316 Stainless Steel

- Hatch, Deck Vent - Translucent w/Locks & Sky Screen Covers (Trapezoid)
- Hull Windows, Stainless Steel - (2 Fixed; 1 Salon, 1 Galley)
- Lights, Navigation
- Portlights, (8) Stainless Steel - (2 Opening, 6 Fixed)
- Resin, High-Performance Vinylester
- Rub Rail, PVC w/Stainless-Steel Insert
- Storage, Transom (For Fenders & Gear) w/Gas Assist
- Stringer System, Foam & Fiberglass
- Swim Platform w/Concealed Stainless-Steel Four-Step Swim Ladder w/Integral Grab Handle
- Thru-Hull Fittings, Stainless Steel
- Toe Rail, Molded Fiberglass - Deck
- Vent System, Engine Room, Stainless Steel
- Water Filtration System (Charcoal)
- Windshield Washer System
- Windshield Wipers w/Delay & Speed Control
- Windshield, Tempered/Tinted Curved Glass Bonded In w/Electric Front Vent

MID-STATEROOM

- Curtain, Privacy w/Dedicated Storage
- Entertainment Center:
 - Gaming System Port
 - MP3 Port w/12V Outlet (1 Salon, 1 Helm)
 - TV, 40" Flatscreen w/DVD Player & Gaming System Port
 - Audio/DVD Player (Media Room)
- Hanging Locker w/Light - Port & Starboard
- Lighting, Blue LED Accent
- Ottomans, (2) Movable w/Dual-Purpose Tops (Cushions or Cocktail Tables) & Storage Below
- Seating, Conversation Pit - Converts to Double Berth w/Slide-Out Base (Ultraleather)
- Storage, Cabinet - Starboard

SALON

- Seating, L-Shaped Sofa w/Storage Below - Converts to Bed w/Filler Cushions (Ultraleather)
- Stereo, iPod Interface Port w/Docking Station
- Stereo, Sony 12V AM/FM Single CD, Sirius Satellite Receiver w/Antenna, Amplifier, Subwoofer, Speakers (4 cabin, 4 cockpit), Digital Cockpit Remote Control & Speaker Selector Switches
- Storage, Gunwale Cabinets
- Storage, In-Floor
- Table, Dinette w/High-Gloss Wood Surface & Dedicated Storage

UNDERWATER GEAR

- Propellers, Stainless Steel
- Seacocks (On All Underwater Fittings)
- Seawater Strainers
- Trim Tabs, Hydraulic (Integrated w/Zeus System When Selected)

WASTE SYSTEMS

- Head System, VacuFlush
- Holding Tank Level Indicators - MDP & Head
- Holding Tank w/Dockside Pump-Out
- Sump Box w/Pump - Automatic

WATER SYSTEM

- Freshwater Washdown Spigots - Transom & Engine Room
- Manifold System w/Shutoff Valves
- Pressure Water System w/12V Pump
- Shower, Cockpit - Hot & Cold

- Water Heater, 120V (11-Gallon)
- Water Inlet, Dockside

WINDLASS SYSTEM

- Anchor Chute, Stainless Steel
- Anchor Rope/Chain Storage w/Gas Assisted Hatch
- Anchor Washdown Spigot
- Anchor, Galvanized
- Windlass, Rope/Chain w/Foot Switches

Optional Equipment

ELECTRONICS OPTIONS

- GPS/Chartplotter, Raymarine E120 Widescreen - Auxiliary Display
- Radar/GPS/Chartplotter - Raymarine E120 Widescreen 12.1" Color LCD w/Integrated 4-kW HD Open Array Scanner - Primary Display

GENERATOR OPTIONS

- (Generator Manufacturer & Size May Vary Due to Product Availability)
- *Generators include SmartCraft Interfacing
- 11.5 kW Onan - Diesel, 120V/60 Cycle
- INDIVIDUAL OPTIONS
- Air Conditioning/Heating - Cockpit (16,000 BTU) w/Defroster
- Anchor, Stainless Steel (In Lieu of Galvanized)
- Canvas, Dash Cover
- COCKPIT DROP CURTAIN W/ AFT SEAT COVER
- Colored Hull, Two-Tone (Blue or Black)
- DSS Satellite TV System
- Flagpole w/Base & Yacht Flag
- Flooring, Teak - Upper Cockpit
- Footrest, Helm Seat - Stainless Steel
- Gray Water System
- Grill, Built-In w/Fiberglass Lid (120V) - Cockpit
- Lights, Underwater - Transom (2)
- Refrigerator, Dual Voltage - Cockpit (Drawer-Style In Lieu of Std. IceMaker)
- Spotlight w/Dual Halogen Bulbs - Remote Controlled
- Stereo, Sound System Upgrade - Cockpit (Speakers & Amps)
- Sun Pad, Forward Deck w/Adjustable Backrest
- Sunroof Shade, Hardtop
- Table, High-Gloss Teak w/Vinyl Cover - Cockpit (In Lieu of Std. Table)
- TV, 22" Flatscreen LCD w/DVD Player - Cockpit
- TV, 26" Flatscreen LCD (120V), w/Remote DVD Player - Upper Salon
- Vacuum System, Central - 120V (Beam)

PROPULSION

- T-Zeus Cummins MerCruiser QSB 480 (T-480 hp - 353 kW)

Disclaimer

The Company offers the details of this vessel in good faith but cannot guarantee or warrant the accuracy of this information nor warrant the condition of the vessel. A buyer should instruct his agents, or his surveyors, to investigate such details as the buyer desires validated. This vessel is offered subject to prior sale, price change, or withdrawal without notice.**customContactInformation**

Joe Yeni Jr

Direct 772 872 2232

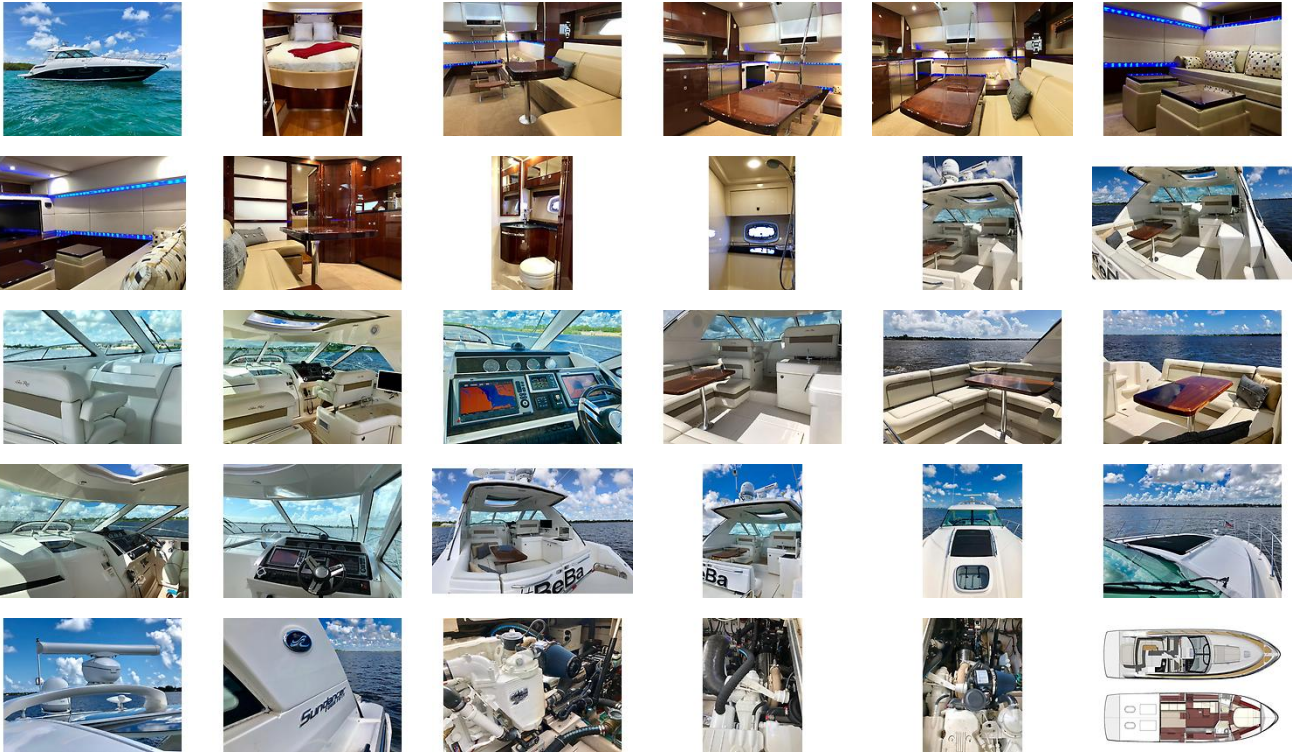
joe@yenimarine.com

www.YeniMarine.com

External Links

- [Manufacturer Website](#)Manufacturer Website

GALLERY



LOCATION MAP



MASTER ADMIN
Yeni Marine Group
841 SW Pine Tree LN
Palm City, FL, US
Office: 772-872-2232
Mobile: 866-771-6898
info@yenimarine.com