



MASTER ADMIN
Yeni Marine Group
841 SW Pine Tree LN
Palm City, FL, US
Office: 772-872-2232
Mobile: 866-771-6898
info@yenimarine.com

2012 Sea Ray 350 Sundancer

Boat Type: Cruiser

Address: Palm City, FL, US

Price: \$138,500



OVERVIEW

Just in time for your family summer cruise. Here is a low hour Sea Ray 350 Sundancer that serviced and ready to take you and your family on a dream vacation or day trip. She loaded with Axius Joys Stick, GPS, Auto Pilot, A/C, and Generator. Call us directly today for your private inspection.

Fresh Bottom Paint

Full 100 Hour Service on Mains

Full 100 Hour Service on Generator

New Clears

Exterior Detail

Interior Detail

TRADES ARE WELCOME AND FINANCING IS AVAILABLE

SPECIFICATIONS

Basic Information

Manufacturer:	Sea Ray	Vessel Name:	
Model:	350 Sundancer	Boat Type:	Cruiser
Year:	2012	Hull Material:	Fiberglass
Category:	Power	Hull Type:	
Condition:	Used	Hull Color:	
Location:	Palm City, FL, US	Designer:	
Available for sale in U.S. waters:	Yes	Flag of Registry:	

Dimensions & Weight

Length:	35 ft - 10.67 meter	Draft - max:	3 ft 7 in - 1.09 meter
LOA:	-	Bridge Clearance:	-
Beam:	11 ft 6 in - 3.51 meter	Dry Weight:	15400 ft - 4693.92 meter

Engine

Make:	MerCruiser	Engine Type:	
Model:	82 MAG	Drive Type:	
Engine(s):	2	Fuel Type:	Gas/Petrol
Hours:	280	Horsepower:	375 (Individual), 750 (combined)
Cruise Speed:	30 MPH	Max Speed:	-
Range:	-	Joystick Control:	No

Tank Capacities

Fuel Tank:	225 gallons - 1 tank(s)	Holding Tank:	28 gallons - 1 tank(s)
Fresh Water Tank:	40 gallons - 1 tank(s)		

Accommodations

Total Cabins:	-	Crew Cabins:	1
Total Berths:	-	Crew Berths:	1
Total Sleeps:	1	Crew Sleeps:	1
Total Heads:	1	Crew Heads:	1
Captains Cabin:	-		

DESCRIPTIONS

Steering System

Joystick Control Standard Features

- Mercury Installation Quality Certification - standard 2-year limited engine warranty
- Choice of twin MerCruiser sterndrives, V-drive inboards, or Axius propulsion system with helm joystick control
- Standard SmartCraft® Diagnostics with optional upgrades.
- Weatherproof switch pads and breaker panels with Electronic Interface Modules (EIM).
- Cockpit wet bar with solid-surface countertop and room for an optional refrigerator or icemaker
- Standard SmartCraft® digital throttle and shift controls (DTS).
- Electrically actuated engine access hatch for easy access to the engine room
- Wide bench-style helm seat with two flip-up thigh-rise bolsters
- Standard flatscreen TV with remote DVD player
- Wide open, spacious cabin with abundant storage throughout.
- Large solid-surface galley countertop and abundant storage above and below
- Integral swim platform with four-step stainless steel ladder
- Water manifold system.
- Sea Ray Owners Club™ membership (available in USA & Canada)

AIR CONDITIONING / HEATING

- Custom Integral Vent System
- Reverse Cycle System: (12,000 BTU)

CABIN FEATURES

- Carbon Monoxide Monitor
- Flooring, Hardwood - Maple
- Lighting, 12V
- Outlet, Phone
- Outlets, 120V GFI Protected
- Shades, Pleated
- Stereo, Sony
- Storage, In-Floor
- Wood Interior Package Cherry or Maple Wood-Finish Cabinets

CANVAS (SUNBRELLA)

- Aft Curtain
- Aft Sunshade
- Canvas Storage Bag
- Front Curtains
- Side Curtains

CERTIFICATIONS

- Meets Applicable USCG & ABYC Standards
- Mercury Installation Quality Certification
- NMMA Certification

COCKPIT FEATURES

- Beverage Holders (10)
- Carpet Liner, Snap-In - Cockpit
- Cooler, Carry-On: w/Designated Storage
- Door, Cabin Entry (Sliding & Lockable): Fiberglass w/Integral Steps
- Door, Transom
- Floor Liner, Fiberglass
- Hatch, Engine Room
- Lighting, Indirect
- Outlet, 120V GFI Protected
- Outlet, 12V Accessory
- Seating, Aft Bench w/Built-In Table Storage & Fiberglass Storage Base
- Seating, Aft-Facing w/Molded Fiberglass Storage Base
- Seating, Bucket
- Seating, Helm Bench w/Dual Flip-Up Thigh-Rise Bolsters, Adjustable Captain's Seat & Fiberglass Storage Base
- Sport Spoiler, Molded Fiberglass (Seamless)
- Steps, Boarding
- Storage, Side Panel
- Table, Cockpit Solid Teak w/Dedicated Storage & Sun Pad Filler Cushions
- Wet Bar

CONTROL STATION

- Alarms, High-Water: Bilge & Cabin
- Compass, Dash
- Emergency Start System
- Horn
- Instrument Panel
- SmartCraft Diagnostics
- SmartCraft Digital Throttle & Shift (DTS) w/Trim Switch
- Steering Wheel, Wood-Accent
- Steering, Power Assisted w/Leather Wrapped Isotta Tilt Wheel
- Switch Pads
- Tilt & Trim, Power

ELECTRICAL SYSTEMS

- Battery Charger/Converter 120V/60 Cycle
- Battery Switches (2)
- Battery Trays
- Breaker Panels, Waterproof
- Isolator, Galvanic
- Mercathode II
- Panel, DC Main Breaker
- Panel, Main Distribution - AC
- Panel, Main Distribution - DC
- Shore Power, Dual 30 Amp/120V/60 Cycle
- TV/Phone Inlet
- Wiring, Color-Coded

ELECTRONICS

- Electronics Circuit, 30 Amp

- VHF Radio
- Raymarine GPS

ENGINE ROOM

- Bilge Pump, 12V Automatic
- Bilge Pumps, 12V: Automatic High-Water (1 Bilge, 1 Cabin)
- Blowers, 12V Bilge (2)
- Fire Suppression system
- Gel-Coated Engine Room (Pearl)
- Insulation, Engine Room - 2"
- Lighting, 12V
- Oil Filters - Remote
- Underwater Exhaust System: Patented (V-Drives Only)

FUEL SYSTEM

- Fuel Lines (USCG - Type A-1)
- Fuel Tank, Aluminum

GALLEY

- Countertop, Solid Surface
- Handrail, Stainless Steel
- Lighting, 12V
- Microwave 120V/60 Cycle
- Outlet, 12V Accessory
- Power Vent, 12V
- Refrigerator, Drawer 12V
- Refrigerator, Dual-Voltage
- Storage, Drawers
- Storage, Upper & Lower
- Stove, Two Burner (Recessed)
- Trash Receptacle

HEAD

- Flooring - Tile
- Handrail, Stainless Steel
- Head (VacuFlush)
- Head, Enclosed
- Mirror, Head Door
- Mirror, Head Wall
- Power Vent, 12V
- Shower Wand
- Storage, Medicine Cabinet
- Storage, Upper Shelves
- Vanity

HULL & DECK FEATURES

- Bottom Paint - (white hulls only)
- Bow & Stern Eyes, Stainless Steel
- Bow Rail, Stainless Steel
- Cleats, Custom Sea Ray 10" (8)
- Deck Fill Plates
- Drain Plug, Brass-Threaded
- Gel Coat, Arctic White
- Graphics, Striping

- Handrails, Stainless Steel
- Handrails, Stainless Steel
- Handrails, Stainless Steel
- Hatch, Deck Vent
- Hull Windows, Opening
- Light, Stern
- Lights, Navigation: Stainless Steel
- Resin, High-Performance Vinylester
- Rub Rail, PVC w/Stainless Steel Insert
- Seating, Foldaway
- Skylights (2)
- Thru-Hull Fittings Stainless Steel
- Toe Rail: Molded Fiberglass - Deck
- Vent System, Engine Room
- Windshield Wipers
- Windshield, Tempered/Tinted Curved Glass

MID-STATEROOM

- Curtain, Privacy (Hideaway)
- Mirrored Bulkhead
- Seating, Ultraleather or Allante Fabric Conversation Pit
- Storage, Drawer
- Storage, Upper & Lower

PROPULSION

- T-MerCruiser 350 MAG ECT Bravo III w/DTS (T-320 hp - 239 kW) (Non-ECT Engines Available Outside the US)

SALON/DINETTE

- Lighting, 12V
- Sofa
- Storage, Gunwale Cabinets
- Table, Dinette
- TV, Flatscreen w/Remote DVD Player

UNDERWATER GEAR

- Bonding System w/Zinc Hull Plate (V-Drives Only)
- Propeller Shafts, 1 1/2" Stainless Steel (2) - Aquamet 19 (V-Drives Only)
- Propellers, Nibral 3-Blade (V-Drives Only)
- Propellers, Stainless Steel (Sterndrives Only)
- Rudders, Manganese-Bronze
- Seacocks Engines (V-Drives Only)
- Seawater Strainers Engines (V-Drives Only)
- Shaft Logs, Dripless w/Extra Seal Carrier Kit (V-Drives Only)
- Struts, Manganese-Bronze (V-Drives Only)
- Trim Tabs, Hydraulic (Integrated w/Zeus System)

V-BERTH

- Berth, Double (Island Style)
- Curtain, Privacy (Hideaway)
- Sheet Set, Fitted: (Neutral Color)
- Storage Cabinet
- Storage, Gunwale Cabinets
- Storage, Hanging Locker

WASTE SYSTEMS

- Head System, VacuFlush
- Holding Tank (28-Gallon)
- Holding Tank Level Indicator
- Sump Box

WATER SYSTEM

- Freshwater Washdown Spigot
- Pressure Water System w/12V Pump
- Shower, Cockpit
- Water Heater, (6 Gallon)
- Water Inlet, Dockside
- Water Manifold System
- Water Tank (40-Gallon)

WINDLASS SYSTEM

- *Recessed
- Anchor Chute: Stainless Steel
- Anchor Rope/Chain Storage
- Anchor, Galvanized
- Windlass, Rope/Chain: w/Foot Switches

Options

- SmartCraft VesselView Display
 - Propulsion - Engine Hour Meters, Engine Status, Performance and Fuel, Peak Performance, Boost Pressure (optional), Troll Control, Cruise Control
 - Vessel- Vessel Status, Tank Status, Steering Position
 - Environment and Navigation - GPS Interface, Depth and Water Temperature, Depth Alerts, Trip Log Information, Fuel to Waypoint Data, Navigation Data
 - Active Alarms/Details
 - Alarm History/Details
- 5.0 kW Kohler Low Emission - Gas: 120V/60 Cycle
- Gel-Coated Dash: Nickel
- Grill, Cockpit: Built-In (120V/60 Cycle) Stainless Steel
- Macerator w/Seacock Interlock system
- Spotlight, 5" Remote-Controlled
- TV, Flatscreen w/Remote DVD Player - Mid-Cabin
- VacuFlush Head w/Direct Overboard Discharge (Int'l)
- Vacuum System, Central
- T-MerCruiser 8.2 MAG ECT SeaCore DTS Bravo IIIx w/AXIUS (T-375 hp - 279 kW) Stern Drives (Non-ECT engines available outside the US)

Disclaimer

The Company offers the details of this vessel in good faith but cannot guarantee or warrant the accuracy of this information nor warrant the condition of the vessel. A buyer should instruct his agents, or his surveyors, to investigate such details as the buyer desires validated. This vessel is offered subject to prior sale, price change, or withdrawal without notice.**customContactInformation**

Joe Yeni Jr

Direct 772 872 2232

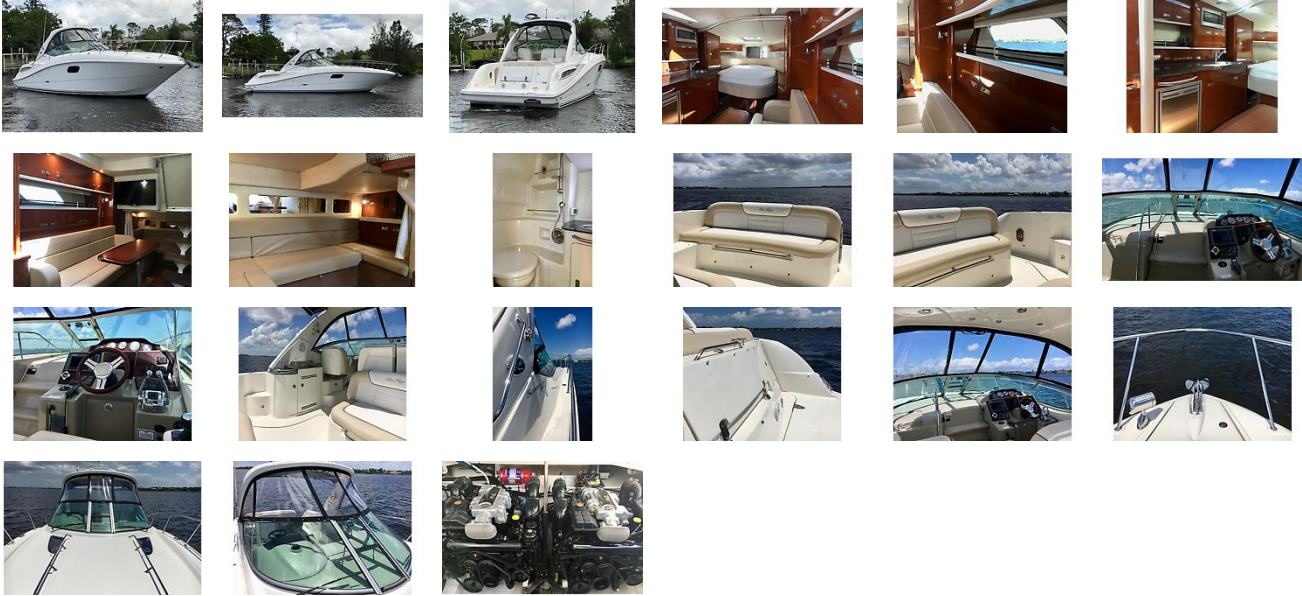
joe@yenimarine.com

www.YeniMarine.com

External Links

- [Manufacturer Website](#)Manufacturer Website

GALLERY



LOCATION MAP



MASTER ADMIN

Yeni Marine Group

841 SW Pine Tree LN

Palm City, FL, US

Office: 772-872-2232

Mobile: 866-771-6898

info@yenimarine.com